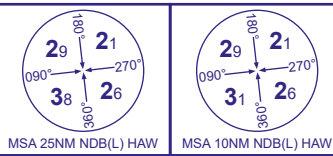


INSTRUMENT APPROACH - ICAO

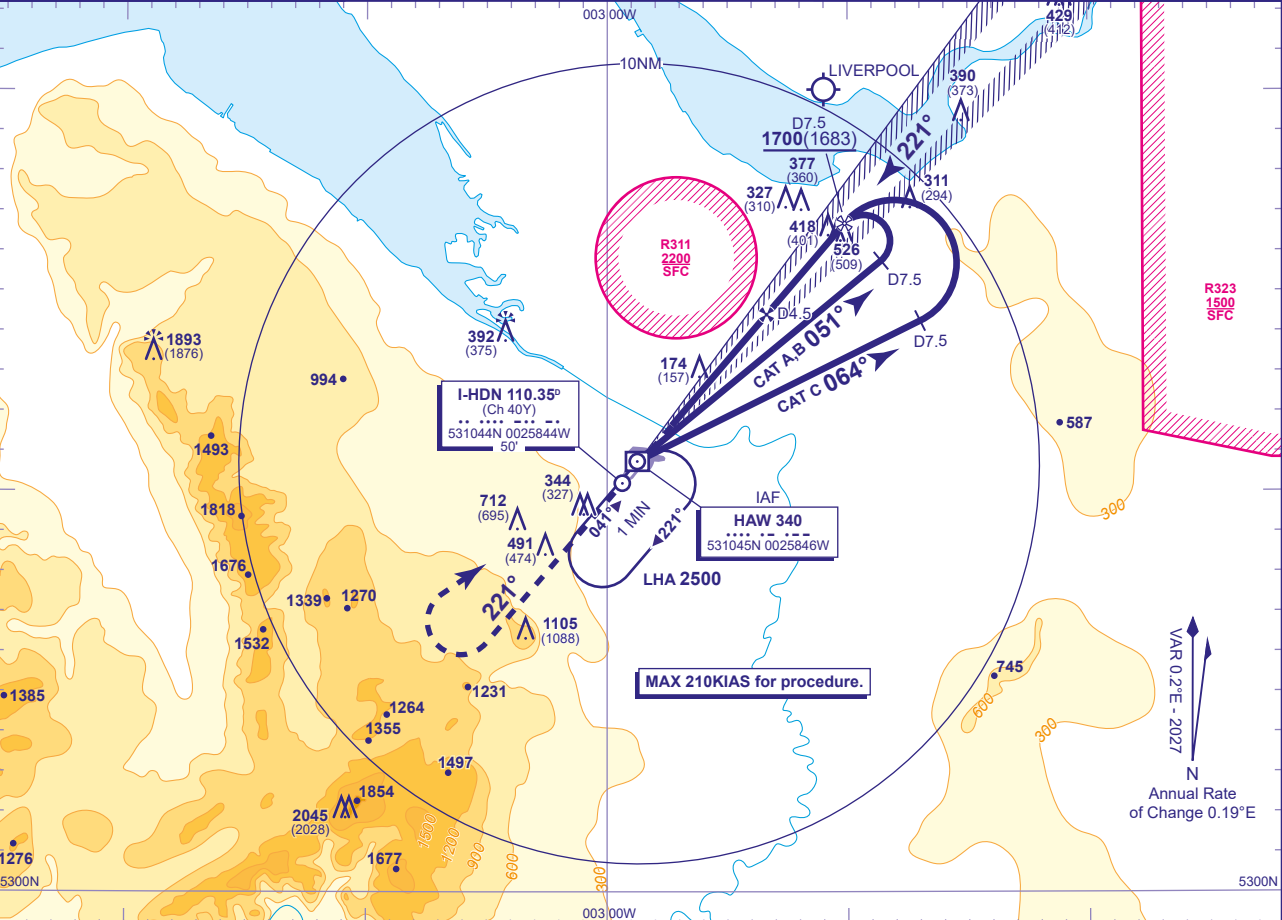
HAWARDEN
ILS/DME/NDB(L)
RWY 22
(ACFT CAT A,B,C)



TWR 124.955	HAWARDEN TOWER
RAD 120.055, 130.015*	HAWARDEN RADAR
ATIS 125.430	HAWARDEN INFORMATION
*As directed by ATC, Not continuously monitored	

AD ELEVATION	45
THR ELEVATION	17
OBSTACLE ELEVATION	2045 AMSL (2028) (ABOVE THR)
BEARINGS ARE MAGNETIC	

TRANSITION ALTITUDE	5000
---------------------	------

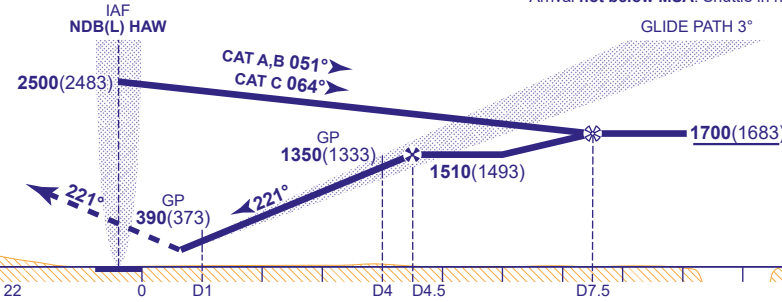


RECOMMENDED PROFILE GLIDE PATH 3°, 320FT/NM

DME I-HDN	4	3	2	1
ALT(HGT)	1350(1333)	1030(1013)	710(693)	390(373)

RDH 52

Climb straight ahead to 2500, then turn right to NDB(L) HAW at 2500 or as directed.



Aircraft Category	A	B	C
OCA (OCH)	2.5% Climb	380(363)	390(373)
	3% Climb	270(253)	280(263)
	Total Area	800(755)	900(855)
VM(C)OCA (OCH AAL)	East of RWY 04/22	700(655)	800(755)
			1500(1455)

Rate of descent	G/S KT	160	140	120	100	80
	FT/MIN	850	750	640	530	430

AIRCRAFT UNABLE TO RECEIVE DME I-HDN
Advise ATC. Subject to ATC approval, radar ranges will be provided at 7.5NM outbound and at 4.5NM inbound.